

2023成都
世界科幻大会

2023 CHENGDU
WORLD SCIENCE FICTION CONVENTION

2023 CHENGDU WORLDCON

18-22 Oct, 2023

Chengdu Science (Science Fiction) Museum

Progress Report

#2



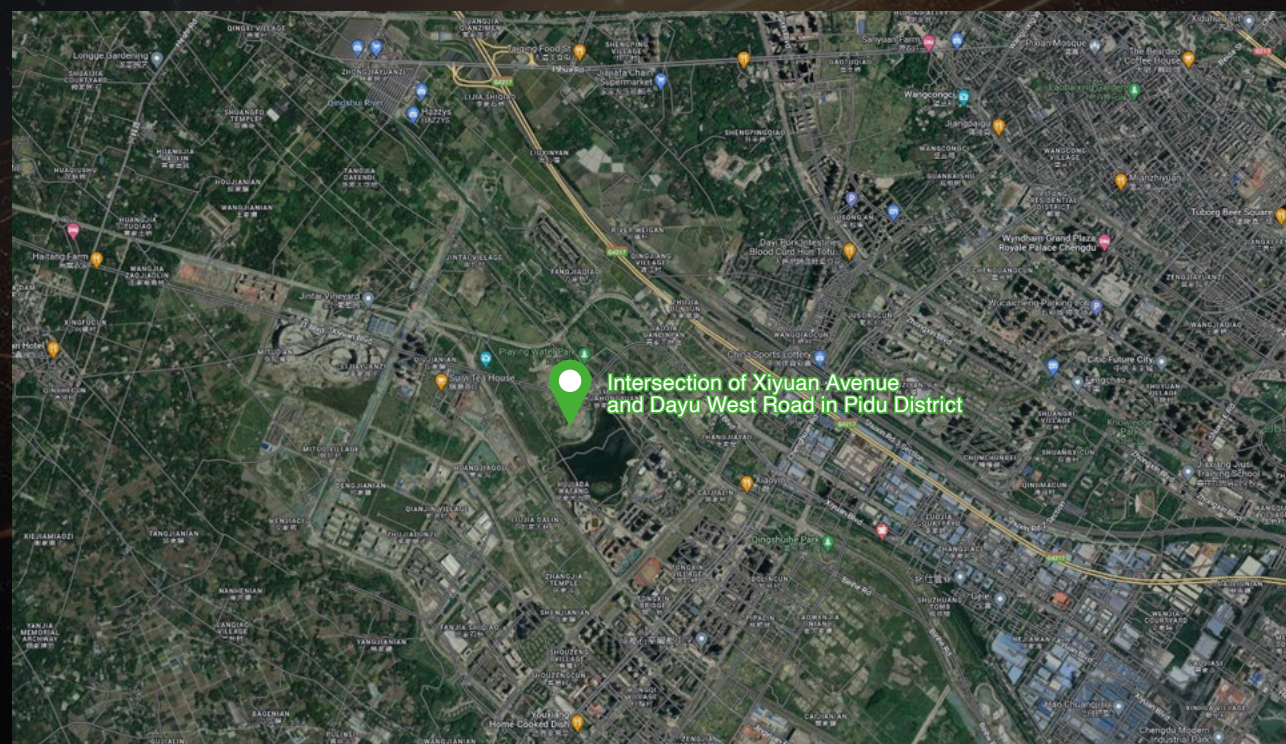
2023成都
世界科幻大会

2023 CHENGDU
WORLD SCIENCE FICTION CONVENTION

2023 Chengdu World Science Fiction Convention

Date: 18-22 Oct, 2023

Intersection of Xiyuan Avenue and Dayu West Road in Pidu District
Chengdu Science (Science Fiction) Museum



2023成都
世界科幻大会

2023 CHENGDU
WORLD SCIENCE FICTION CONVENTION

Progress Report

#2

World Science Fiction Society", "WSFS", "World Science Fiction Convention", "Worldcon", "NASFiC", "Hugo Award", the Hugo Award Logo, and the distinctive design of the Hugo Award Trophy Rocket are service marks of Worldcon Intellectual Property, a California public benefit nonprofit corporation managed for the benefit of the World Science Fiction Society

Part 1

BASIC INTRODUCTION

Chair's Message

We are now less than half a year away from the Chengdu Worldcon, and many parts are in place. Construction of the new building is going well, and the target completion date of the end of August looks reasonably likely. We have an accepted filing for a bid for the 2025 Worldcon, and a ballot will be coming out soon. The Hugo finalists ballot was released on 6th July. For those of you who wish to attend in person, this PR contains information about our hotels, and also information about transportation to our site, both within China and from outside (including visa information). Please contact us if there are questions about how to attend. We look forward to having you at this Worldcon, whether in person or virtually.

Co-chair of 2023 Chengdu Worldcon
Ben Yalow
He Xi
Chen Shi

Basic Introduction

1. Opening ceremony (specific content to be confirmed)

The opening ceremony extravaganza will be held on the evening of October 18, 2023. The overall visual style and program have been finalized. The opening ceremony will present three chapters: "Encounter: A Journey of Discovery and Encounter with the Other," "Harmony: Resonating Dreams," and "Voyage: Leaping into the Future." These chapters cleverly incorporate key moments such as the mayor's speech, the appearance of honored guests, the unveiling of the Hugo Award Base, and the launch of the convention to create a sci-fi-filled festive atmosphere. The opening ceremony will not only retain the traditional rituals of the convention but also express the unique characteristics of China and Chengdu. It will be a blend of Chinese and Western elements, a fantastical celebration of harmony and coexistence.

2. WSFS Business Meeting

The annual working conference of the World Science Fiction Society's governing body, known as the Business Meeting, will be held on the second day of the convention, October 19, 2023. The meeting will last for 3-4 days, starting at 10:00 AM each day and lasting for approximately 3 hours. The Business Meeting is a decision-making meeting where proposals can be made by all members to develop, supplement, and revise the World Science Fiction Convention Constitution and Standing Rules, as well as other management regulations. Proposals must be submitted by at least two members and sent to the Business Meeting working group email at least 30 days before the start of the Business Meeting. Members must be present at the meeting in person to be eligible to vote. Additionally, during this Business Meeting, the host city and organizing committee for the 2025 World Science Fiction Convention will be selected. To facilitate member participation, the Business Meeting will be conducted in both Chinese and English, with simultaneous interpretation systems and real-time captioning systems available. There are still two months left before the proposal submission channel closes, and we encourage everyone to actively submit proposals. Our email address for proposal submissions is businessmeeting@chengduworldcon.com.

3. Site Selection Meeting for the 2025 Worldcon

Voting will be held in advance and at the convention to select the location of the 2025 Worldcon and the organizing committee of the convention.

4. Hugo Award Selection and Award Ceremony

The current convention continues the tradition by featuring 19 categories of awards. The Hugo

Awards selection process consists of two rounds: nomination and final voting. Eligible members vote according to the "one person, one vote" rule to select Hugo Award works and individuals that comply with local laws and regulations. The Chengdu organizing committee will review the nominated works and validate the votes. The list of finalists for the 2023 Hugo Awards, comprising 114 works or individuals, has been announced on the official social media accounts and website. Each category has 6 nominated works or individuals.

5. Exhibition (Fantable)

The SF-themed exhibition is the major activity of the Worldcon, with four sections: "SF+" Industry Ecology Exhibition, Science Fiction IP Trade Exhibition, SF Community Co-creation Exhibition, and Near-future Technology Creation Exhibition, with a planning area of nearly 5,000 square meters. More than 70 exhibitors from fields like science fiction publishing, SF film and television, SF games, SF cultural and creation industries and derivatives, science fiction eco-enterprises, artificial intelligence, brain-computer interaction, bionic robotics and other technology frontier enterprises, as well as senior fandom, are invited to participate. The contact email is exhibition@chengduworldcon.com

6. Programs

Within five days, more than 30 flagship thematic panels, organized by the committee, will be held. These panels cover four major categories: interactive sessions with sci-fi celebrities, sci-fi industry promotion, sci-fi fan exchanges, and academic exchanges in the field of science fiction. Additionally, there will be over 300 social panels in various subfields of "sci-fi +" that encompass literature, science, film, art, comics, animation, costumes, sci-fi fan communities, music, games, new media, gatherings, podcasts, community organizations, and writing. These social panels will feature activities such as small-scale workshops, interviews, book signings, readings, and roundtable conferences.

So far, more than 200 domestic topics and over 100 international topics have been collected through official channels. Examples include "Will Biohacking Flourish?" "Being an Alien in a Foreign Land," "Technological, Ethical, and Social Challenges of Artificial Wombs," "The Pale Blue Dot in the Universe: Ecology and the Human Future," "How to Write Your First Science Fiction Novel," "Is There Still Reality in a Post-GPT World?" and "The Sci-Fi Narratives of Commercial Space Travel," among others. More detailed topics will be listed in "Progress Report 3."

We welcome enthusiastic participation and encourage you to sign up by sending an email to program@chengduworldcon.com. The program staff will look at the suggestions and produce the final program.

7. Bridge the Binary Realities: Science Fiction, Life and On line

The 2023 Chengdu World Science Fiction Convention's online platform will innovate by creating an online platform that integrates guest participation, live event showcasing, virtual tours of a sci-fi park, multi-mode communication and interaction, industry promotion, and transaction conversion. It aims to meet the attendance needs of sci-fi fans worldwide who are unable to physically attend the convention.

Paying tribute to renowned sci-fi IPs, the platform will feature three-dimensional scene designs.

It will include a central information space station that connects the Hugo Hall, Parallel Panels, and Social Interactions, providing participants with virtual digital identities. Through a gamified immersive experience, attendees will be able to enter the virtual scenes, breaking the limitations of time and space to experience the sci-fi convention as if they were physically present. Currently, the design of sci-fi scenes and the development of backend system technologies are in progress.

8. Closing Ceremony

The closing ceremony will review the significant moments of the 2023 Chengdu Worldcon, including Chengdu's bid, preparation and organization of the convention; express thanks to the relevant figures and organizations that supported the preparation of the Worldcon, the best program, the best booth and other; pass the token of the conference to the next host city. Through the organic integration of ceremony and performance, it will present Chinese romance and science fiction sentiment.

Note: More detailed information will be presented in "Progress Report 3". Stay tuned for updates.



Part 2

INTRODUCTION OF THE VENUE

About the Venue the Pidu District

The Pidu District is located in the northwest of Chengdu City and was historically known as "Pi Yi". It covers an area of 395 square kilometers and administers 10 streets (towns). With a permanent population of 1.39 million, it is known as the hometown of Douban (fermented bean paste), Shu embroidery, and bonsai. The district has a long and rich history, dating back over 4,000 years to the Baoguan period of the ancient Shu Kingdom. It is the birthplace of the ancient Shu civilization and the source of the agriculture-based civilization in the upper reaches of the Yangtze River. It boasts a splendid history and civilization comparable to the Baodun culture, Sanxingdui culture, and Jinsha culture. It has nurtured 37 representative intangible cultural heritage projects, including the renowned Pixian Douban (bean paste) and the Tang Dynasty tribute Shu embroidery.

The district is abundant in beautiful tourism resources. Eight national-level A-grade tourist attractions, such as Nongke Village and Qinggangshu Village, blend harmoniously together. Cultural landmarks such as Wangcong Temple and ancient city ruins shine brilliantly. There is a plethora of high-quality hotels, including Wyndham and Sheraton. The district is well-connected with four rapid and convenient rail transit lines, including the subway and express railways. It is the birthplace of rural tourism and agritainment in China and is recognized as one of the most beautiful ecological tourism destinations in China. It is also a national demonstration county for leisure agriculture and rural tourism and a top ten national ecological and leisure tourism city. The Pidu District ranks 41st in the "2022 National Comprehensive Strength Top 100 Districts" and 87th in the "2022 Sady National Top 100 Districts".



Introduction of the Venue

The main venue of the event, Chengdu Science (Science Fiction) Museum, is located on Jingyuan West Road, Deyuan Street, Pixian District, Chengdu City. The museum has a construction area of 59,400 square meters and a total height of 31.9 meters, classified as a super-large-scale venue. The design of the venue draws inspiration from the form of "nebula" to interpret the themes of science and science fiction with a future architectural image that is free, diffuse, and boundless. The mysterious "Ancient Shu Eye (Golden Foil Mask)" from ancient Shu culture is incorporated into the roof shape of the "nebula." The venue is divided into three floors above ground and one floor underground. The first floor of the building features a theater, themed exhibition areas, and a museum, centered around a shared atrium. The theater can accommodate 3,500 people. The second and third floors of the building are the forum and salon areas. The underground floor mainly includes a time-space tunnel, parking lot, and utility rooms.

To meet the accessibility needs of some visitors, the venue is equipped with facilities such as wheelchair ramps, accessible parking spaces, accessible elevators, and accessible restrooms, providing an accessible experience throughout the venue.



Transportation

To facilitate the attendance of members, the organizing committee has made every effort to coordinate local public transportation to ensure smooth participation. Detailed information about specific stations and how to provide member credentials will be presented in "Progress Report 3". The information of shuttle bus from the hotels to the venue will also be released in PR3.

Date	Route	departure schedule and frequency
16 th -17 th in October	Tianfu Airport/ Shuangliu Airport/ Chengdu East Railway Station— The Venue	1. Departure time: 10:00am-22:00pm 2. Frequency: One departure every two hours 3. Departure schedule: 10:00, 12:00, 14:00, 16:00, 18:00, 20:00, 22:00
18 th in October	Tianfu Airport/ Shuangliu Airport/ Chengdu East Railway Station— The Venue	1. Departure time: 10:00am-22:00pm 2. Frequency: One departure every two hours 3. Departure schedule: 10:00, 12:00, 14:00, 16:00, 18:00, 20:00, 22:00

There are two airports serving Chengdu, with Chengdu Tianfu International Airport (TFU) (opened 2021) serving international and domestic traffic, and Chengdu Shuangliu International Airport (CTU) currently serving only domestic traffic.

Some of the international airlines have still not updated their reservations systems to include TFU, and will only generate CTU as the code for Chengdu.

Recommended means of public transportation

Chengdu Tianfu International Airport

Route 1: Chengdu Tianfu International Airport (Metro Line 18) - Western China International Expo City Station (transfer to Metro Line 6) - Shuxin Avenue Station - transfer to the dedicated shuttle line to the venue

Route 2: Chengdu Tianfu International Airport (Metro Line 18) - South Railway Station (transfer to Metro Line 1) - North People's Road Station (transfer to Metro Line 6) - Shuxin Avenue Station - transfer to the dedicated shuttle line to the venue

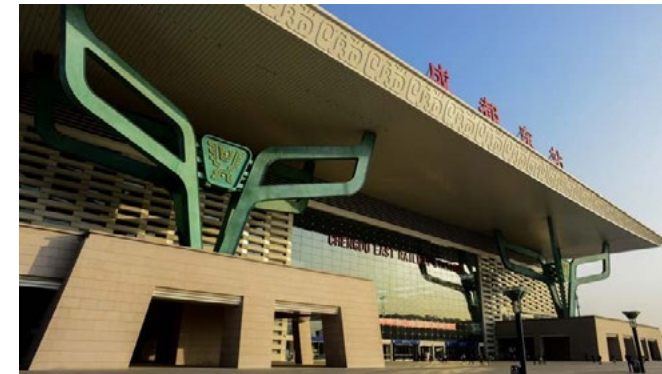
Route 3: Chengdu Tianfu International Airport (by airport bus) - Chunxi Road Station (transfer to Metro Line 2) - Xipu Station (transfer to Metro Line 6) - Shuxin Avenue Station - transfer to the dedicated shuttle line to the venue



Chengdu Shuangliu International Airport

Route 1: Chengdu Shuangliu International Airport (Metro Line 10) - Taipingyuan Station - transfer to Metro Line 7 - Southwest Jiaotong University Station - transfer to Metro Line 6 - Shuxin Avenue Station - transfer to dedicated shuttle line to the venue

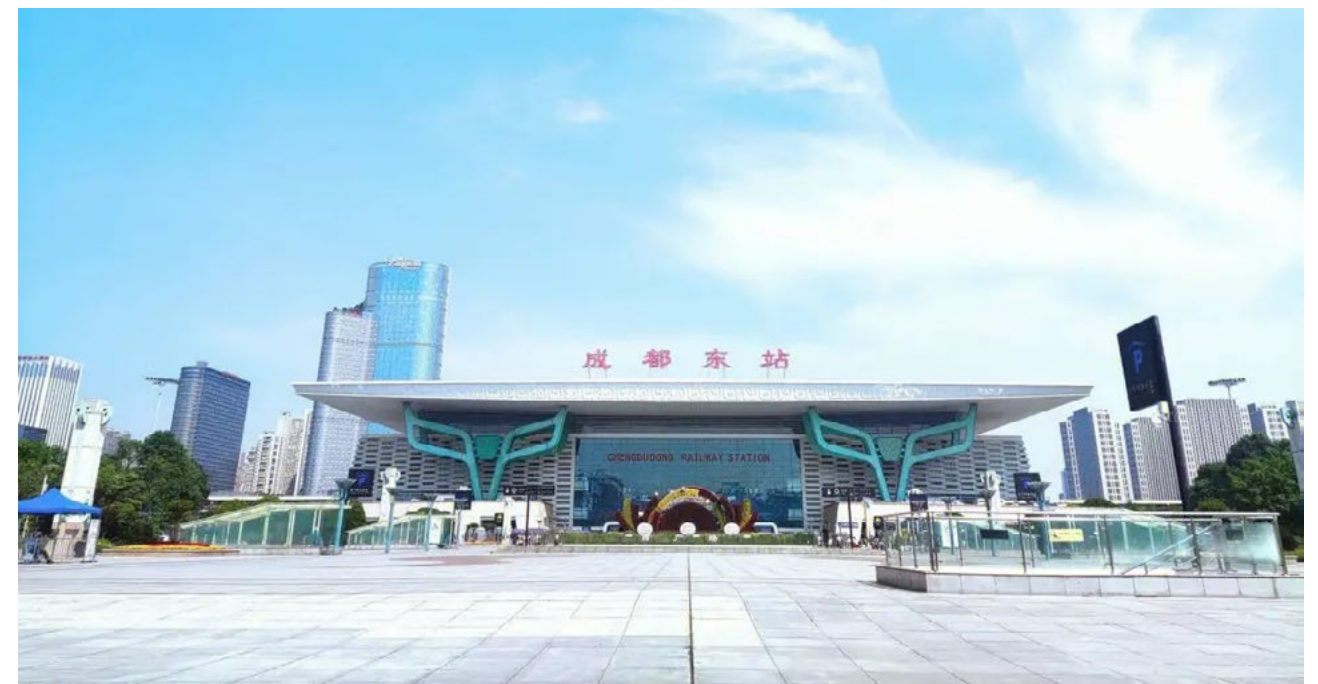
Route 2: Chengdu Shuangliu International Airport (Metro Line 10) - Taipingyuan Station - transfer to Line 3 - Qianfeng Station - transfer to Metro Line 6 - Shuxin Avenue Station - transfer to dedicated shuttle line to the venue



Chengdu East Railway Station

Route 1: Chengdu East Railway Station (Metro Line 2) - Xipu Station (transfer to Metro Line 6) - Shuxin Avenue Station - transfer to the dedicated shuttle line to the venue)

Route 2: Chengdu East Railway Station (Metro Line 7) - Southwest Jiaotong University Station (transfer to Metro Line 6) - Shuxin Avenue Station - transfer to the dedicated shuttle line to the venue



Chengdu West Railway Station

Route 1: Chengdu West Railway Station (Tram Line 2) - Dayu East Road Station - transfer to the dedicated shuttle line to the venue

Route 2: Chengdu West Railway Station (Metro Line 4) - Provincial Hospital of TCM Station (Metro Line 2) - Xipu Station - transfer to Metro Line 6) - Shuxin Avenue Station - transfer to the dedicated shuttle line to the venue)



Self-Driving Travel Assistance

We will provide parking services around the venue and shuttle bus services from the parking lots to the main venue during the conference.

Note: For local transportation in Chengdu, taxi and online hailing-car services (e.g Didi or Gaode Map) are available.



Booking Guide:

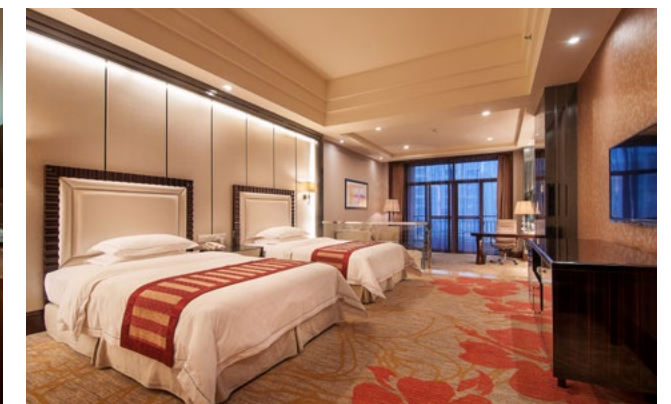
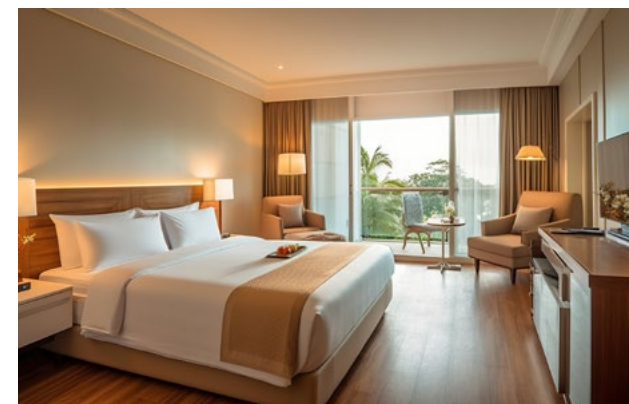
1. Fans can make reservations through online platforms such as Ctrip, Tongcheng, Meituan, and Tuniu.
2. Fans can make reservations through the hotel front desk phone and the dedicated channel for the members.
3. Fans can make reservations by sending an email to the hotel's email address.
4. Platform members are advised to prioritize online reservations using their platform membership. If you encounter difficulties or language barriers during the booking process, please contact Mr. He, the overall responsible person for hotel service. His phone number is 15102877975, and his email address is pixianshuyuan@163.com.
5. Sheraton has a limited number of rooms available for people with access needs, and that if you have such, please contact with our email: membership@chengduworldcon.com. We'll try to accommodate you there if there are still rooms available.
6. Wyndham hotel has few rooms for booking. We'll release the exact number of Wyndham hotel in PR3.

World Science Fiction Convention Pidu District Hotel Recommendations

	Name	Address	Tele	Exclusive Reservation Phone for Members	Distance From the Venue (km)	Booking Website	Email Address	International Card Payments
1	Chengdu Tianyue Hotel	693 East Street, Pitong Street, Pidu District	028-61838989	Liu Mengxiu 19938821891 19382197749	5.6	https://m.ctrip.com/webapp/hotel/hotel-detail/474633.html?atime=20231018&daylater=120&days=1&ctrl=0&pay=0&discount=&latlon=&listindex=6&userLocationSearch=false#fromList	2371172710@qq.com	Yes
2	Jimei Hotel	1092, Times Mansion Square, Pitong Street, Pidu District	028-64720333	Yang 15982394223	6.8	https://m.ctrip.com/webapp/hotel/hotel-detail/24401271.html?atime=20231018&city-id=28&ctm_ref=ch5_hp_bs_lst	625341901@qq.com	Yes

	Name	Address	Tele	Exclusive Reservation Phone for Members	Distance From the Venue (km)	Booking Website	Email Address	International Card Payments
3	MrZ Boutique hotel(Shudu Wanda Plaza)	No. 118 Liangshuijing West Road, Pitong Street, Pidu District	19949425592	Hu Changhui 18380222556	6.5	https://m.ctrip.com/webapp/hotel/hoteldetail/24347536.html?atime=20230620&city-id=28&ctm_ref=ch5_hp_bs_lst	1040891755@qq.com	Yes
4	Li Feng Hotel(Shudu Wanda Plaza)	Building 13, SOHO, Wanda Plaza, No. 109 Wangcong East Road, Pitong Street, Pidu District	028-85828188	Zou Xiaomin 13880825204	6.8	https://hotel.bestwehotel.com/HotelDetail/?hotelId=4552&checkInDate=2023-06-20&checkOutDate=2023-06-21&extend=1,1,0,0,0,0	xiaomin.zou@jinjianghotels.com.cn	Accept cards with Union Pay logo
5	He Feng Hotel(Shudu Wanda Plaza)	Apartment 14-1, SOHO, Wanda Plaza, No. 139 Wangcong East Road, Pitong Street, Pidu District	028-64961999	Lin Baiquan 18202811109	6.8	https://m.ctrip.com/webapp/hotel/hoteldetail/10685888.html?days=1&atime=20231018&ctrl=0&num=undefined&biz=undefined	905616722@qq.com	Yes
6	Lailiyade Hot(Shudu Wanda Plaza)	No. 388 Liangshuijing Street, Pitong Street, Pidu District	028-81050111	Li Xuemei 15108325018	7.1	https://m.ctrip.com/webapp/hotel/hoteldetail/89778151.html?atime=20231018&daylater=0&days=1&ctrl=0&pay=0&discount=&latlon=&listindex=6&userLocationSearch=false#fromList	1138836512@qq.com	No
7	Lizhicheng Rui Xuan Hotel	Wanda Plaza, No. 388 Liangshuijing Street, Pitong Street, Pidu District	028-81050333	Yang Yang 19108233562	7.1	https://m.ctrip.com/webapp/hotel/hoteldetail/85463647.html?atime=20231018&daylater=0&days=1&ctrl=0&pay=0&discount=&latlon=&listindex=2&userLocationSearch=false#fromList	626930294@qq.com	No

	Name	Address	Tele	Exclusive Reservation Phone for Members	Distance From the Venue (km)	Booking Website	Email Address	International Card Payments
8	Zhonglin Bali Island International Hotel	Block A, Unit 1, Zhongtie Century Center, Chengguan East Road, Pitong Street, Pidu District	028-87871199	Su Xiaoli 15390066059	4.7	https://m.ctrip.com/webapp/hotel/hotel-detail/5272519.html?atime=20231018&daylater=0&days=1&ctrl=0&pay=0&discount=&latlon=&listindex=2&userLocationSearch=false#fromList	718012250@qq.com	No
9	Chengdu Greenland Yishang Hotel	No. 8, Section 1, Zhongxin Avenue, Pitong Street, Pidu District	028-64196688	Yang Xiaojiao 18280375168 Tao Chao 17716857375	5.6	https://m.ctrip.com/webapp/hotel/hotel-detail/12838536.html?atime=20231018&daylater=0&days=1&ctrl=0&pay=0&discount=&latlon=&listindex=12&userLocationSearch=false#fromList	810854910@qq.com dos@hiex-pidu.com	Yes
10	Chengdu Greenland City Express Hotel	No. 8, Section 1, Zhongxin Avenue, Pitong Street, Pidu District	028-64196688	Yang Xiaojiao 18280375168 Tao Chao 17716857375	5.6	https://m.ctrip.com/webapp/hotel/hotel-detail/6001461.html?atime=20231018&daylater=0&days=1&ctrl=0&pay=0&discount=&latlon=&listindex=54&userLocationSearch=false#fromList	810854910@qq.com dos@hiex-pidu.com	Yes



Delicacy around the Venue

Gourmet area inside the venue

There is a 370-square-meter food and beverage area on the first floor of the interior, mainly providing light meals with Western fast food, coffee and tea drinks, which can meet the needs of the participants for dining and resting.

Lakeside food stalls

The 500-meter-long Jingrong Lake shore is arranged with two specialties bazaars, which bring together a rich selection and complete categories of catering business, such as non-heritage specialties, Chinese snacks, local Chengdu food and SF creative food, and can accommodate thousands of people to dine.

Delicacy around the venue

Within 10 kilometers of the venue, there are abundant food resources, gathering all kinds of traditional and new Sichuan cuisine, creative private restaurants, prestigious restaurants, Internet-famous restaurants and global fashion food, etc., which can meet the demand of quality and diversified food experience.



Coffee



Tea



成都特色小吃



三大炮



冷锅串串



甜水面、凉粉、凉面



钟水饺

川菜





hot pot

Part 3

VISA GUIDEBOOK

Application procedure

Before applying for a visa, please contact the email visa@chengduworldcon.com to get an invitation letter, then print 3 copies as it's needed by customs.

If your city doesn't have a consulate, you can ask for a travel agent to help with visa application.

1. Applicants should log to "China Online Application Website (COVA)" <https://cova.mfa.gov.cn/> to fill out the online visa application form, and then schedule an appointment at Appointment for Visa Application Submission (AVAS) <https://avas.mfa.gov.cn/> for on-site submission of documents the visa application center nearby after filling the form.

2. The applicant or his/her representative can submit application material at the visa application center with printed appointment credential at scheduled time. If you can not submit in time due to special circumstances, please cancel the original previous appointment at Appointment for Visa Application Submission (AVAS) at least a day ahead. Otherwise it will be regarded as breaking an appointment, in this case, the original application number will be expired and the applicant should refill a new visa application form and reschedule an new appointment.

3. The applicant should read reminders from COVA system carefully and click "COVA online visa form filling notes" and fill in the visa application form item by item accordingly. Please make sure all information you filled in are real, accurate and complete and then print and sign it after filling the form. Once the application form is submitted, it can not be modified, and you must refill a new form if modifications are needed.

4. The applicant or his/her representative should submit complete paper application form (9 pages-10 pages in total) and required materials (including A core materials and B general materials)

A. Basic Documents, including invitation letters and visa invitation content.

- (1) Personal information of the invitee: name, gender, birthdate, passport number, etc.
- (2) Information about the invitee's visit to China: the purpose of visiting China, arrival&departure date, places of visit, relationships between the inviting entity and the invitee, financial sources.
- (3) Information of the inviting entity: name, telephone number, unit seal, the sign of the legal representative or the unity inviter, date, etc. (relevant Information must be included in the text of the invitation).

B General Documents

(1) Original passport (passport must be valid for more than 6 months with blank visa pages).

*If the previous visa has recorded multiple entries in the past years, the old passport is required to be submitted along with.

(2) Photocopy of the bio-page of passport.

(3) COVA Visa Form. Please log onto <https://cova.mfa.gov.cn> to fill in COVA visa application form online. (Please follow Annex 1 "Important Tips for online COVA visa form filling")

(4) Photocopy of the applicant 's latest China visa or the China residence permit.

(5) Photocopy of the applicant's proof of residency in the U.S. (e.g. driving licenses, utilities bill, bank statements, etc.).

(6) Where You Stay Form (Please see Annex 3, handwritten signature required).

(7) If the applicant is a citizen of a third country in the United States, please provide a copy of proof of legal stay or residence in the U.S. (eg. green card, visa, I20, I94 form, etc.).

(8) If the applicant had Chinese citizenship and this application is the first Chinese visa application after naturalization in a foreign country, please provide the original Chinese passport and two copies of the bio-page and a copy of certificate of naturalization.

(9) If the applicant's name has been changed, and it is the first time to apply for a Chinese visa to China after the name change, a photocopy of the name change document is required.

(10) For the visa application by a minor of Chinese origin born in the US, please click here for detailed guidance. http://us.china-embassy.gov.cn/lsfw/zj/qz/201502/t20150205_5098662.htm

5. If the form is not completed properly or the documents do not meet the requirements, the visa application may be returned on site and a new form and appointment will be required.

6. Since January 21, 2023 (included), the Embassy will not accept any new visa applications by mail, and visa applications submitted by mail before January 20 (included) will receive a "Preliminary Approval Number" if they pass the preliminary examination, and you can continue to mail the documents for applying. If you do not pass the preliminary examination, please complete the online form and make an appointment according to the application procedure above, and then submit the application documents on site at a visa application centre .

7. You can pay the application fee by credit card (Master Card or Visa only) or cash check (Money Order, Cashier's Check) for on-site pickup.

8. Individuals who do not need to apply for visa

- (1) Foreigners subject to various mutual visa exemption agreements
- (2) Foreigners with valid Chinese permanent residence certificates
- (3) Foreigners with various valid residence permits
- (4) 24-hour visa-free transit individuals
- (5) Foreigners with valid APEC business travel cards (excluding virtual cards) (Attention: The United States and Canada are transitional members of the APEC travel card program, the APEC business travel cards issued by them do not have visa functions and travelers must apply for visas to visit China)

Note: Please consult the border control authorities at the place of entry about the application of the 72- and 144-hour visa-free transit policy.

Visa applications must be processed in accordance with the territorial division of the Chinese Embassy and Consulates in the United States. For more information on the application process, please visit the website of each embassy. For the visa application process in the embassy's consular district (including the former Consulate General in Houston), please click on this link:

http://us.china-embassy.gov.cn/lsw/zj/zytz/202301/t20230112_11006581.htm

Annex 1: List of Consular Districts

Chinese embassy in the U.S.	Chinese consular in New York	Chinese consular in Chigago
Washington DC	Connecticut	Colorado
Alabama	Maine	Illinois
Arkansas	Massachusetts	Indiana
Delaware	New Hampshire	Iowa
Florida	New Jersey	Kansas
Georgia	New York	Michigan
Idaho	Ohio	Minnesota
Kentucky	Pennsylvania	Missouri
Louisiana	Rhode Island	Wisconsin
Maryland	Vermont	
Mississippi		
Montana		
Nebraska		
North Carolina		
North Dakota		
Oklahoma		
South Carolina		
South Dakota		
Tennessee		
Texas		
Utah		
Virginia		
West Virginia		
Wyoming		
Chinese consular in California	Chinese consular in Los Angeles	
Alaska	Arizona	
Northern California	Southern California Hawaii	
Nevada	New Mexico	
Oregon	Pacific Islands	
Washington		

Annex 2 Important Tips for online COVA visa form filling

(I) Please carefully read the prompts and requirements of the COVA form system, and complete the entries of the visa application COVA online form step by step, making sure that the information is true, accurate and complete. Please note: Once the application form has been submitted, it cannot be modified in any way.

(II) The "location" option for submitting the visa application should be in line with the consular jurisdiction.

(III) Basic personal information. Surname, given names, gender, date of birth, nationality, passport number, passport type, etc. must be exactly the same as those on the passport information page, otherwise your visa application will be returned.

(IV) If you were born in China (including Hong Kong, Macao and Taiwan), please note:

1. Application form 1.1E The native language name must be entered in Chinese with the Chinese character input method, please do not fill in "Chinese", "Chinese", etc.
2. In the application form 1.6G, select "Yes" for "former nationality", and then select the nationality information.
3. Item 1.6H of the application form is required. If the applicant is applying for a Chinese visa for the first time, this entry will be automatically generated during the form filling process; but if the applicant has previously applied for a Chinese visa, this entry will not be displayed when filling in the online form, and the form must be printed out and supplemented by hand-written Chinese name and other information. This Item cannot be empty.

(V) Completely fill in the work experience and educational background

1. Please fill in the complete work experience after graduation from school.
2. The "position" and "duty" of the application form 3.3D and 3.3E must be filled in completely.
3. Please fill in the complete learning experience since high school in 4.2, and the diploma/degree and major in 4.2C and 4.2D must be completed.

(VI) Completely fill in each address

The address of the spouse in 5.5A of the application form, and the addresses of the parents in 5.5B and 5.5C must fill in the address of the current location, not the address of the place of birth. The address must be filled in completely, including street, city, state, and country.

(VI)If you choose "not applicable" for any entry in the form, you need to state the reason for “not applicable”.

(VIII)Printing and signing. After completing the COVA online form filling, you must print out a full set of application forms, including the "Confirmation of Online Visa application" and "Visa Application Form of the People's Republic of China" (depending on the individual filling situation, a total of 9 to 10 pages will be generated). All the pages of the forms must be printed to turn in, the signature and date on the Confirmation Page and the 8th page of Visa Application Form of the People's Republic of China must be handwritten by the applicant him/herself. Visa applicant under the age of 18 is signed by their guardian, and meanwhile add a handwritten signature in the "For person filling in the application on the applicant's behalf”.

Annex 3:

Where You Stay Form

Dear visa applicant,

If you need to apply for a Chinese visa in our Embassy, you MUST be IN the US now. If currently you are NOT IN the US, your visa application will not be processed.

Please tick and fill in the place you are currently in.

_____Yes, I am currently in the US.

The State name is_____.

_____No, I am currently not in the US.

I am in_____ (name of the Country/Region).

Please sign your name,

Date,

MM_____DD_____YYYY

Contact information for overseas Chinese Visa centres/consular visa office

Country	City	Contact information for overseas Chinese Visa centres/consular visa office
Canada	Ottawa	Office Address: 220 Laurier Avenue West, Suite 1450, Ottawa, K1P 5Z9 Phone and Fax: 613-563-8472/8473 (Manual service in weekdays from 9:00 a.m.-11:30 a.m. EST)
	Toronto	Office hours: (Monday-Friday) Application filing hours: 09:00-15:00 Fee collection hours: 09:00-16:00 Office Address: 1501, 393 University Ave., Toronto, On. M5G 1E6 Phone: 416-345-8472(VISA) Fax: 416-345-8473
	Vancouver	Office hours: (Monday-Friday) Application filing hours: 09:00-15:00 Fee collection hours: 09:00-16:00 Office Address: 1501, 393 University Ave., Toronto, On. M5G 1E6 Tel: 416-345-8472(VISA) Fax: 416-345-8473
South Korea	Seoul	Office Address: 3F, Namsan Plaza Building (formerly Jidong Building), 173 Gyeongye Road, Jung-gu, Seoul Office hours: Monday to Friday, closed on Saturdays, Sundays and holidays Application submission time - 9:00 a.m. to 3:00 p.m. (deadline for expedited applications is 11:30 a.m.) Fee collection time - 9:00 a.m. to 4:00 p.m. Special Note: This visa center accepts expedited service (i.e. second business day pickup service) Applications until 11:30 a.m. of the same day.
Japan	Tokyo	Office hours:(Monday to Friday)Application submission time: 09:00-15:00, Fee collection time: 09:00-15:00 Special Note: The Visa Application Center accepts applications for expedited services until 11:30 a.m. Address: 12F, Building B, Ariake Frontier Building, 7-26, Ariake 3-chome, Koto-ku, Tokyo Tel: 81-3-3599-5515 Fax: 81-3-6432-0550
	Osaka	Office hours:(Monday to Friday) Application submission time: 09:00-15:00 Fee collection time: 09:00-15:00 Special Note: The Visa Application Center accepts applications for expedited services until 11:30 a.m. Address: 12F, Building B, Ariake Frontier Building, 7-26, Ariake 3-chome, Koto-ku, Tokyo Tel: 81-3-3599-5515 Fax: 81-3-6432-0550

Country	City	Contact information for overseas Chinese Visa centres/consular visa office
Malaysia	Kuala Lumpur	Office hours: (Monday to Friday) Application submission time: 09:00-15:00 Fee collection time: 09:00-16:00 Office address: Level 5 & 6, Hampshire Place Office, Jalan Mayang Sari, 50450 Kuala Lumpur, Malaysia Tel: +603 2176 0888 Fax: +603 2161 2234
Thailand	Bangkok	Office hours: Monday to Friday, closed on weekends and holidays Application submission time: 09:00-15:00 (Urgent submission deadline 11:00 a.m.) Payment and collection time: 09:00-16:00 Office Address: 5th Floor Thanapoom, New Petchaburi Road, Bangkok, Thailand 10400 Tel: 66-22075888
Singapore	Singapore	Office Hours: (Monday to Friday) Application Submission: 9:00-15:00, Fee Collection: 09:00-16:00 Special Note: The visa service counter accepts applications for expedited service (i.e. second business day collection service) until 14:00. Office Address: 80 Robinson Road, #16-01/02/02A, Singapore 068898 Tel: 65-67139380 Fax: 65-62260852
Belgium	Brussels	Office address: No. 109 Rue Neerveld, Woluwe Saint-Lambert 1200, Bruxelles Office hours: Monday ----- Friday (except Belgian and Chinese public holidays) Submission time: 9:00 a.m. to 3:00 p.m. Pick-up time: 10:00 a.m. to 4:00 p.m. Enquiry number: 02 775 0888 Service hours: Monday to Friday 9:00 a.m. - 12:00 p.m. (holidays not included) Fax: 02 775 0880
Spain	Madrid	Office hours: (Monday to Friday) Application submission time: 09:00-15:00. Payment and collection time: 09:00-16:00 Address of the Chinese Visa Application Service Center: C/Agustín de Foxá, No29, 1º piso A, 28036 Madrid Tel: 0034--913145918 Fax: 0034--917321959 Email: madridcenter@visaforchina.org

Country	City	Contact information for overseas Chinese Visa centres/consular visa office
Britain	London	Office hours: Weekdays 9:00-15:00 (except holidays) Office address: 12 Old Jewry, London, EC2R 8DU Tel: 0207 776 7888 Fax: 0207 710 6001
	Manchester	Office hours: (Monday to Friday) Application submission time: 09:00-15:00 Payment and collection time: 09:00-16:00 Office address: Ground Floor, 71 Mosley Street, Manchester, M2 3HR Tel: 44-1612369619 Fax: 44-1612445883
Swiss	Bern	Office address: 1st Stock, Murifeld, Weltpoststrasse 5, 3015, Bern, Switzerland Tel: +41 0586188988
Swiss	Gothenburg	Office hours: 10:00-15:00 weekdays by phone and email Office address: Folkungagatan 14-18, 41102, Gothenburg, Sweden Tel: 031-7305866 Fax: 031-7305867
	Stockholm	Office hours: (Monday to Friday) Application submission time: 09:00-15:00 Fee collection time: 09:00-16:00 Office address: Karlavägen 108, Stockholm, Sweden Tel: 08-12201166 Fax: 08-12201167
Austria	Vienna	Office address: Schoenbrunner Strasse 108, Top 1.01, 1050 Wien, Osterreich Office hours Acceptance: Tuesdays 09:00-11:30 Issue date: Wednesdays 12:30-13:30 Contact information: Every Wednesday 10:00-12:00 / 13:30-15:30 for human telephone consultation Tel : +43 1 544 3601 (If you encounter a situation where the phone cannot be reached because our staff is answering other applicants' inquiries, you can also send us an email and we will respond promptly. Email: viennacenter@visaforchina.org) Fax: +43 1 544 3591 23 Email: viennacenter@visaforchina.org

Country	City	Contact information for overseas Chinese Visa centres/consular visa office
German	Berlin	Office address: Invalidenstraße 116, 10115 Berlin Office hours: Monday to Friday (German and Chinese national holidays not included) Submission of applications: 9:00a.m. -3:00p.m. Fee collection: 9:00a.m.-4:00p.m. Contact: 49(0)30979920000 (9:00a.m.- 3:00p.m.) Fax: +49(0)30979920001
	Frankfurt	Office address: Bockenheimer Landstraße 51-53, 60325 Frankfurt am Main Office hours: Monday to Friday (German and Chinese public holidays not included) Application submission time: 9:00a.m.-3:00p.m. Payment and collection: 9:00a.m.-4:00p.m. Closed on Saturday and Sunday Tel: 069-26919130 Fax: 069-269191350
France	Paris	Office address: 25 rue Bassano, Paris 8 Office hours: Monday to Friday (French and Chinese holidays not included) Delivery: 09:00-05:00 (by appointment only) Pick-up: 09:00-16:00 Closed on Saturday and Sunday. Tel: 0140700401 Fax: 0147206328
Italy	Rome	Office hours:(Monday to Friday) Application submission time: 09:00-15:00 Payment and collection time: 09:00-16:00 Special note: The visa service counter accepts applications for expedited service (i.e. second workday collection service) until 11:00. Office address: VIALE REGINA MARGHERITA 279 (2nd floor), ROMA (ITALIA) Tel: 06-44250240 Fax: 06-44260770
	Milan	Office address: 25 rue Bassano, Paris 8 Office hours: Monday to Friday (except for French and Chinese holidays) Delivery: 09:00-15:00 (by appointment only) Pick-up: 09:00-16:00 Closed on Saturday and Sunday. Tel: 0140700401 Fax: 0147206328
	Florence	Office hours: (Monday-Friday) General visa applications: 09:00-15:00, Collection time: 09:00-16:00 Special Note: The Florence Visa Application Service Center does not provide expedited application services. Office address: VIA LORENZO DI CREDI 20 50136 FIRENZE Tel: 055-7094487

Country	City	Contact information for overseas Chinese Visa centres/consular visa office
Australia	Sydney	Office hours: Application processing time: 09:00-15:00 (urgent applications must be submitted before 12:00 a.m.) payment and collection time: 09:00-15:00, Monday to Friday (Australian and some Chinese holidays not included) Closed on Saturday and Sunday Office address: Level 1, 140 William Street, Woolloomooloo NWS 2011, Australia Tel: +61-2-94758800 Fax: +61-2-94758899
	Mellbourne	Office hours: Monday to Friday (closed on weekends and holidays) Application Submission Time: 09:00-15:00 Payment and collection time: 09:00-15:00 Expedited service at the visa service counter, i.e. second business day collection service, application deadline: 12:00a.m. Address: Ground Floor, 570 ST Kilda Road, Melbourne, VIC 3004 Tel: +61-3-99372308 Fax: +61-3-99372338, +61-3-99372337
New zealand	Wellington	Office hours: Monday to Friday (closed on weekends and holidays) Application Submission Time: 09:00-15:00 Payment and collection time: 09:00-15:00 Express service at the visa service counter, i.e. second business day collection service, application deadline: 12:00a.m. Address: Ground Floor, 570 ST Kilda Road, Melbourne, VIC 3004 Tel: +61-3-99372308 Fax: +61-3-99372338, +61-3-99372337

Flight

Prior to the pandemic, there was only one major airport serving Chengdu, Chengdu Shuangliu International Airport (CTU). However, in 2021, a second airport was opened, Chengdu Tianfu International Airport (TFU), and in 2023, almost all international flights were moved from CTU to TFU. As a cautionary note, several of the airline reservations systems do not recognize TFU as a valid airport code, which means people flying to Chengdu from outside China may need to figure out workarounds for this problem.

TFU is substantially further from downtown Chengdu, and from the convention site, than CTU. There is mass transit to TFU, and the convention has made supplemental arrangements for people flying into TFU, as described elsewhere in this progress report.

We will not go into all the alternative methods of getting to Chengdu. But we'd like to mention a few of the more common options.

A relatively straightforward process is to fly to one of the major Chinese gateways, at Beijing or Shanghai. From there, flights are available on multiple airlines to either CTU or TFU.

Alternatively, you can fly to one of the hub cities outside mainland China that has nonstops to TFU. The city with the most connections is Hong Kong SAR, which has very frequent service, on multiple airlines. However, a number of other hubs do have service, although, in some cases, the service is only on certain days, and not daily. Among the common hubs with service from nearby to China are Bangkok, Melbourne, Seoul-Incheon, Singapore, Taipei, and Tokyo-Narita. For those coming from Europe, there are non-stops (on certain days) from Frankfurt and London-Heathrow.

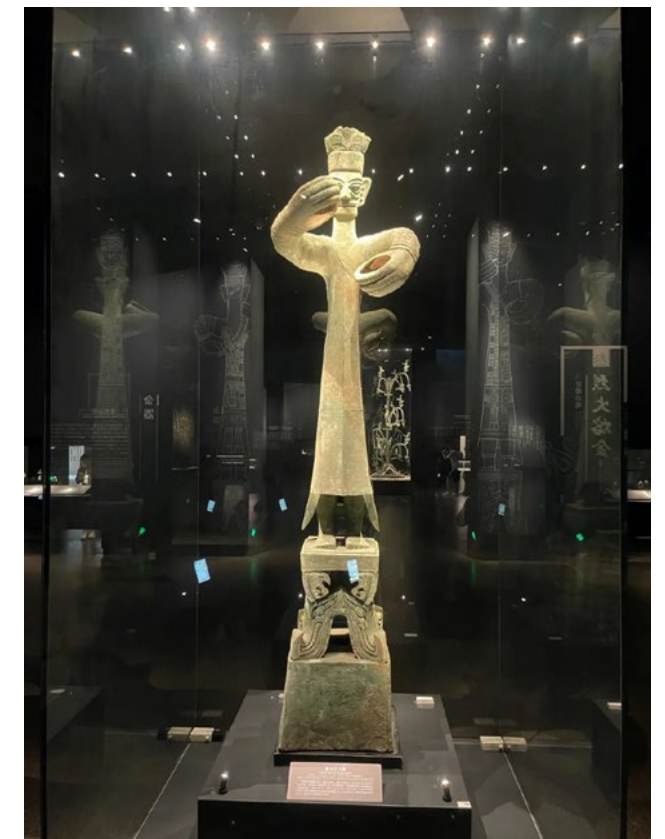
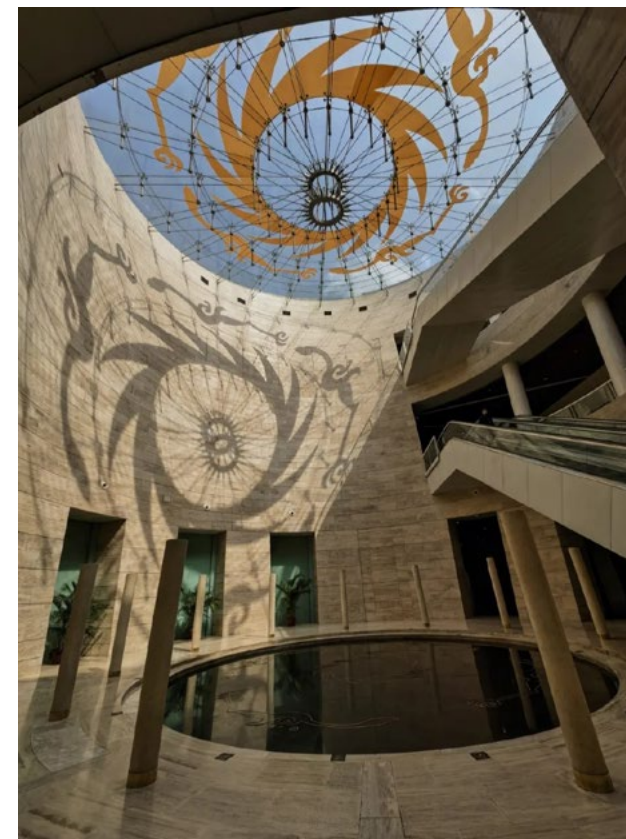
While you can book these flights yourself, you may want assistance of a travel agent who understands all of the options. You can get to Chengdu – but it might be a roundabout routing. And note that international flights are being added over the summer and fall, so that new routings may well open up as the Worldcon gets closer.

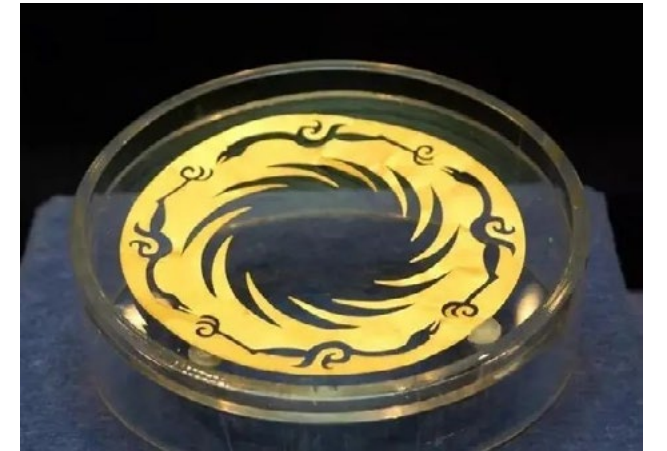
Part 4

HAVE FUN IN CULTURE-RICH CHENGDU

Jinsha Site Museum

The Jinsha Site, discovered in February 2001 in downtown Chengdu, was the capital of the ancient Shu Kingdom, the center of ancient civilization in the upper reaches of the Yangtze River, from the 12th century B.C. to the 7th century B.C. (about 3,200 - 2,600 years ago). The Jinsha Site is the first major archaeological discovery in China since it entered the 21st century, and another major archaeological discovery in Sichuan after the Sanxingdui Ruins.

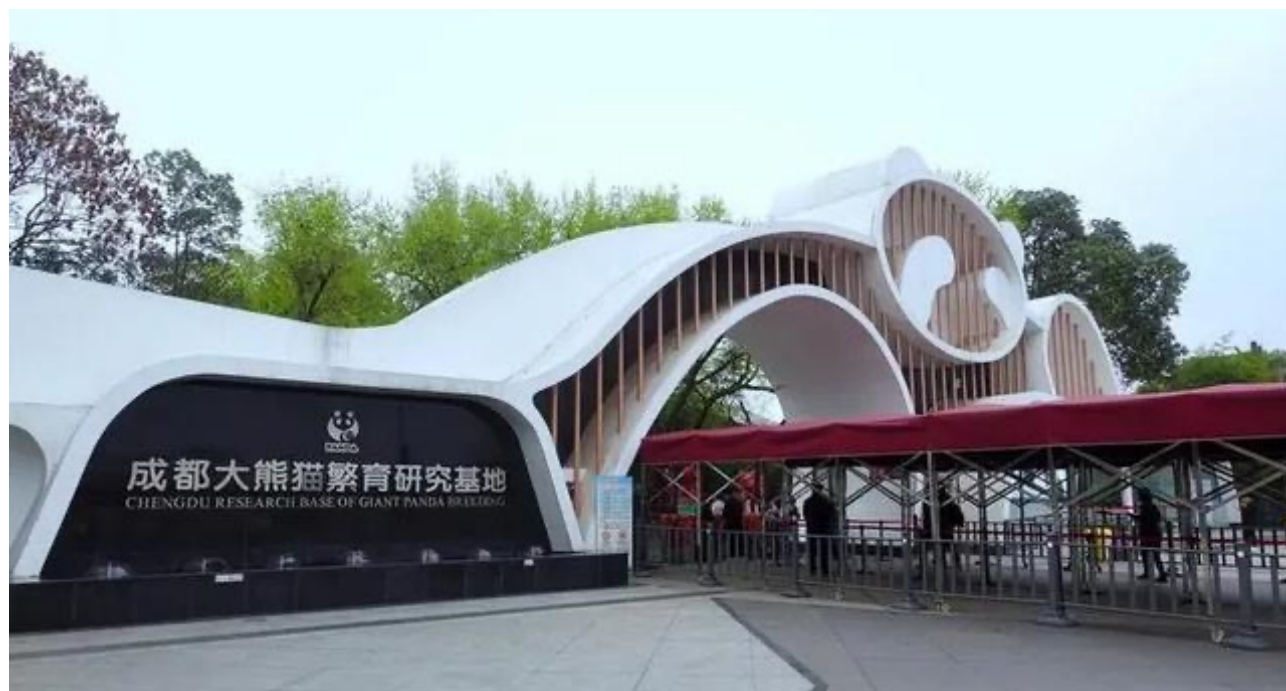




Chengdu Research Base of Giant Panda Breeding

Chengdu Research Base of Giant Panda Breeding is located at No. 26 Panda Avenue in the Outer North of Chengdu, and is now fully equipped with a variety of complete facilities necessary for the breeding of all kinds of giant pandas, including animal houses, feed rooms, medical stations, a giant panda memorial hall and laboratory buildings, as well as thousands of clumps of bamboo and shrubs planted for the consumption of giant pandas.

Chengdu Research Base of Giant Panda Breeding, as a demonstration project for the relocation and conservation of giant pandas, not only devotes itself to the protection of giant pandas, but also organically combines natural and man-made landscapes to create a good living environment for giant pandas, red pandas, and other endangered animals.





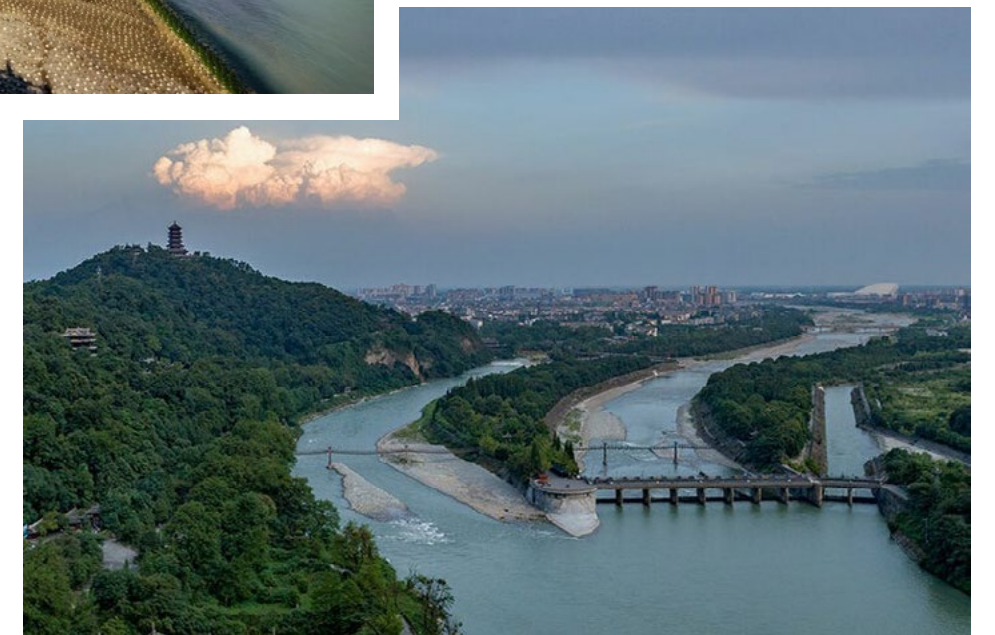
Qingcheng Mountain

Qingcheng Mountain is located in the southwest of Dujiangyan City, Chengdu City, Sichuan Province, against the snowy mountains of Minshan Range, facing the plains of western Sichuan, surrounded by peaks, and enjoying the reputation of “the most secluded place in the world”, and is a sacred place of the Quanzhen Longmen School of Taoism, one of the famous Taoist mountains in China.



Dujiang Dam

The Dujiang Dam is located in the west of Chengdu City, Sichuan Province, on the Min River in the west of the Chengdu Plain. It was built at the end of King Zhao of Qin Dynasty (about 256-251 BC), and is a large water conservancy project organized by Li Bing and his sons, the governors of Shu County, based on the excavation of the former Turtle Spirit. The Chengdu Plain has become the "Land of Heaven", where floods and droughts can be avoided and the land is fertile.



The Chengdu Sichuan Cuisine Museum

Chengdu Sichuan Cuisine Museum is located in Sandaoyan Town, Pidu District, Chengdu City, and is a national AAA-level tourist attraction and a national third-class museum. As a “museum like a grand Sichuan meal”, Sichuan Cuisine Museum provides “eyes, ears, mouth, nose” full-sensory interactive experience scenes, to create a Sichuan cuisine culture dissemination platform. Visitors can learn the knife-work, fire and cooking process of Sichuan cuisine under the guidance of bilingual instructors, and experience the endless charm of Sichuan cuisine culture in all aspects. In addition, visitors can also enjoy the unique cultural style of Sichuan wine, Sichuan tea, Sichuan opera, Sichuan-style architecture and Sichuan-style gardens in the museum.



Temple of Marquis

The Temple of Marquis is a shrine and temple that commemorates Liu Bei, Zhuge Liang, and other heroic figures of the Shu Han Dynasty. It was developed based on the site of Liu Bei's tomb (Huiling). It is located to the south of the east of Huiling and to the south of the west of Han Zhaolie Temple, and the three are in the shape of an inverted pincushion, each standing on its own.



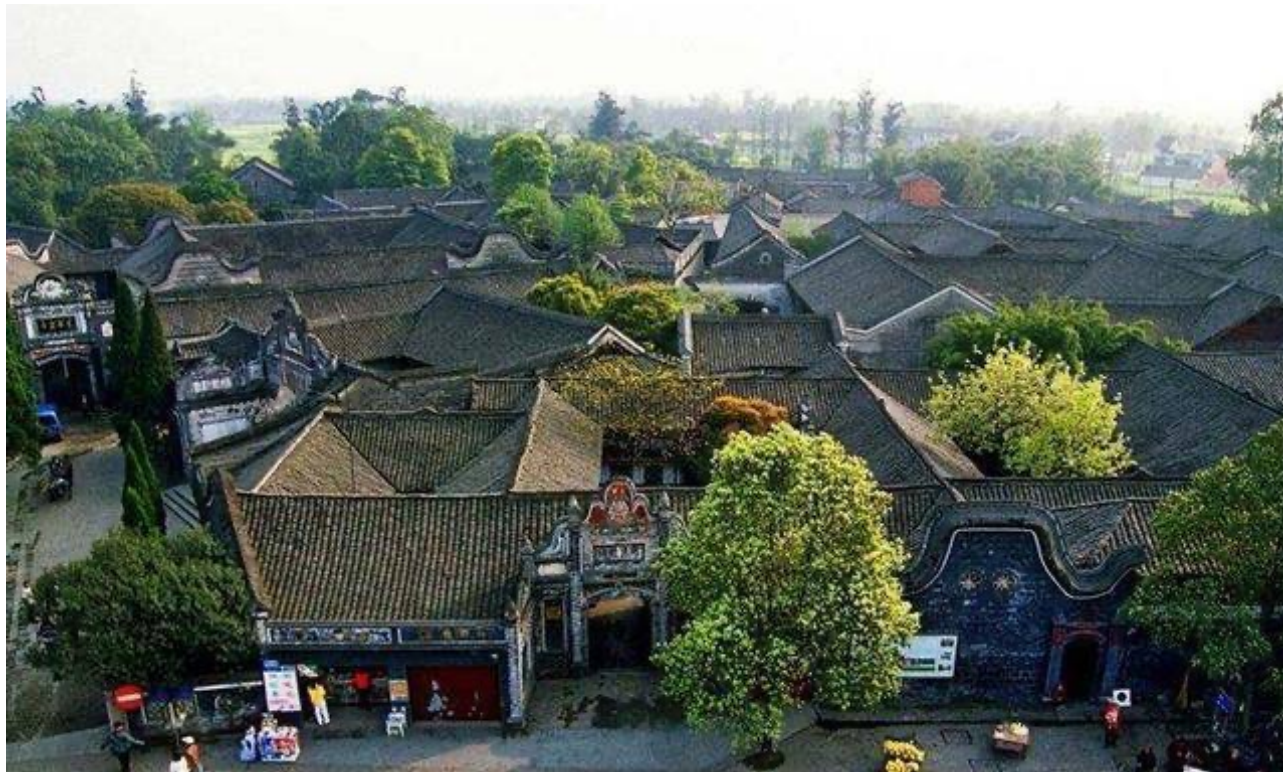
Du Fu Thatched Cottage Museum

Situated on the banks of the Huan Hua River, Du Fu Thatched Cottage is the former residence of Du Fu, a great poet of the Chinese Tang Dynasty, when he lived in Chengdu. Du Fu lived here for nearly four years and composed more than 240 poems. At the end of the Tang Dynasty, the poet Wei Zhuang found the site of the cottage and rebuilt the hut so that it could be preserved, and it has been repaired and expanded throughout the Song, Yuan, Ming and Qing Dynasties.



Anren ancient town

Anren Ancient Town was built in the Tang Dynasty, and most of the existing old-style neighborhood buildings were built in the late Qing Dynasty and early Civil War, especially the buildings in the heyday of the Liu family in the Republic of China, with a combination of Chinese and Western styles, stately, elegant and generous courtyards of all kinds, creating the special architectural style of Anren Town, known as “the best of western Sichuan architecture and culture”. Anren means peace and benevolence, and they are the inherent spirit flowing across the lanes intertwined in the ancient town.



Anren ancient town

Luodai Ancient Town is located in Longquanyi District, Chengdu City, and has four national key cultural relics protection units - Guangdong Guild Hall, Jiangxi Guild Hall, Huguang Guild Hall and Chuanbei Guild Hall. The Hakka Park in the ancient town is the most famous and is the unique one in the showplace of ancient architecture in China. Luodai Ancient Town, where the five-phoenix buildings stand, is the most culturally rich, vibrant cultural leisure and tourism destination in the suburbs of Chengdu.



Sansheng Town

Sansheng Huaxiang is a suburban ecological leisure resort with the theme of sightseeing and leisure agriculture and rural tourism, integrating leisure vacation, sightseeing tourism, catering and entertainment, and business meeting. The five attractions, namely, Flower Village Farmhouse, Happy Plum Forest, Dongli Chrysanthemum Garden, Lotus Pond Moonlight, and Jiangjia Vegetable Field, are known as the "Five Golden Flowers" of Chengdu, and are national AAAA-level scenic spots.



Part 5

HAVE FUN IN MODERN CHENGDU

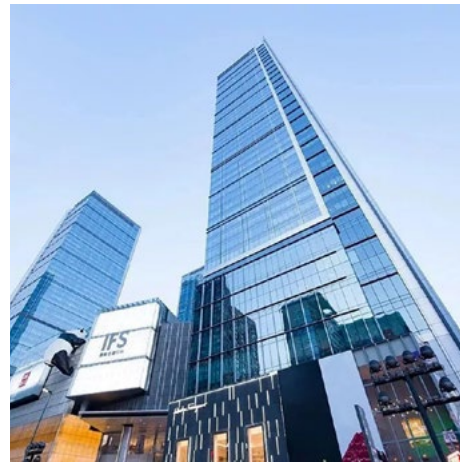
Chinese Art Treasury

Chinese Art Treasury is located in the core area of Luodai Ancient Town scenic spot, covering an area of 200 mu (more than 13.33 hectares), with a construction area of nearly 200,000 square meters. It is the first art and life district in China that integrates art originality, art exhibition, art auction, art trade, art institution business incubation, international performance, art derivatives research and development and sales, glass pottery research and development, handicraft experience, art hotel, food culture, etc. It has taken shape. With art as its leader and art life experience as its characteristic, Chinese Art Treasury is listed as “the key cultural project of Sichuan Province” and “the key high-quality tourism project of Chengdu City”.



Chengdu International Finance Square

Chengdu International Financial Square (Chengdu IFS), located at the intersection of Hongxing Road and Dacisi Road in Jinjiang District, Chengdu, Sichuan Province, is an urban complex that integrates shopping, cultural entertainment, office buildings, serviced apartments, and hotels. Many international brand flagship stores stand next to each other along Hongxing Road, forming a 530-meter-long “International Store Street”, which is not only an important symbol of the image upgrade of the core business district of Hongxing Road but also brings an unprecedented international fashion scenery to Chengdu.



Sino-Ocean Taikoo Li Chengdu

Located at the Chunxi Road subway station, Taikoo Li is adjacent to Daci Monastery, an prestigious religious venue , enjoying superior transportation and pedestrian flow. All those elements constitute it as a destination with unique historical and cultural charm. TaiKoo Li Chengdu is a picturesque project with intertwined lanes and open plazas to present the pulse of the city, while introducing the concept of and “busy-quiet-interwined lanes” to set a model of international metropolis.

